

# **Licensing Rational Performance Tester 9.1.1**

# Contents

<b>About Rational Performance Tester.....</b>	<b>3</b>
<b>About licensing.....</b>	<b>3</b>
Software prerequisites.....	3
Base license.....	3
Protocol license.....	4
Virtual-testers license.....	4
Example 1: HTTP schedule with 400 users.....	4
Example 2: SAP GUI schedule with 50 users.....	5
Example 3: SOA schedule with 10 users.....	5
<b>License verification.....</b>	<b>5</b>
Verifying the base license.....	6
Verifying protocol and virtual-testers licenses.....	6
<b>Index.....</b>	<b>8</b>

## About Rational Performance Tester

---

Rational Performance Tester 9.1.1 is a tool that measures network traffic. That network traffic comes in different forms, protocols. You can simulate the number of users that access the application that you test through virtual users (VU).

A typical configuration consists of the following parts.

1. Workbench
2. Agent(s)

The agent does the execution. On the Rational Performance Tester workbench, you develop tests and present results.

You run a performance test with more than one virtual user through a performance schedule.

You can find documentation about the product functions in the [Knowledge Center](#)

## About licensing

---

Use the following licenses to run Rational Performance Tester.

- [Base license](#) to run the workbench
- [Protocol license](#) to run test in a network protocol other than HTTP
- [Virtual-tester license](#) for virtual users

You can apply licenses to Rational Performance Tester in different ways. The most straightforward way is through the following licenses.

- Permanent licenses, or NodeLocked license, or authorized user license through Activation Kits
- Floating licenses or concurrent licenses on a license server

Use activation kits when you want to use the Rational Performance Tester workbench only on a single computer.

Use floating licenses when you want to use the Rational Performance Tester workbench on different computers.

## Software prerequisites

---

Install the following software to license Rational Performance Tester.

- IBM Installation Manager
- Rational License Key Administrator
- [Optional] Rational License Key Server

**Note:** Use the Rational License Key Server if you use floating licenses.

## Base license

---

With the base license, you run the Rational Performance Tester workbench. To see what you can run with a permanent license, see the [Runtime license examples under Permanent license \(or Starter Edition\)](#).

The most straightforward way for licensing Rational Performance Tester is through the following license types.

- Permanent licenses, or NodeLocked, or Authorized User licenses through Activation Kits.

**Note:** Use activation kits if you want to use the workbench only on a single computer.

- Floating licenses or concurrent licenses on a license server.

**Note:** Use floating licenses when you want to use the Rational Performance Tester workbench on different computers.

### Related tasks

[Verifying the base license](#) on page 6

## Protocol license

---

For the following protocols you need a separate license.

- Citrix
- SAP GUI and SAP Web
- Siebel
- SOA

license/protocol	Citrix	SAP GUI and Web	Siebel	SOA
Floating	X	X	X	X
Authorized User				X

### Related tasks

[Verifying protocol and virtual-testers licenses](#) on page 6

## Virtual-testers license

---

The base license consists of a limited number of virtual users that you can put into the schedule. For more virtual users, install a virtual-testers license. Virtual-testers licenses come only in floating licenses.

**Note:** If you start a schedule with 10 users and you installed a license of 10 000 virtual testers, you check out the entire license. You cannot start another schedule of 9000 users at the same time.

### Related tasks

[Verifying protocol and virtual-testers licenses](#) on page 6

## Example1: HTTP schedule with 400 users

---

- **Software**
  - Rational Performance Tester Workbench
  - Rational Performance Tester Agent(s)
  - IBM Installation Manager
  - Rational License Key Administrator
  - Rational License Key Server
- **Licenses**
  - Rational Performance Tester (Base license for the workbench)

- IBM Rational Test 500 Virtual Tester Pack Floating License Key

## Example 2: SAP GUI schedule with 50 users

---

- **Software**
  - Rational Performance Tester
  - Rational Performance Tester Agent(s)
  - IBM Installation Manager
  - Rational License Key Administrator
  - Rational License Key Server
- Licenses
  - Rational Performance Tester (Base license for the workbench)
  - IBM Rational Performance Tester for SAP Floating License Key
  - IBM Rational Test 50 Virtual Tester Pack Floating License Key

**Note:** 50 Users is the maximum for SAP schedules.

## Example 3: SOA schedule with 10 users

---

- **Software**
  - Rational Performance Tester
  - Rational Performance Tester Agent(s)
  - IBM Installation Manager
  - Rational License Key Administrator
  - Rational License Key Server
- **Licenses**
  - OPTION A
    - Rational Performance Tester (Base license for the workbench)
    - IBM Rational Performance Tester Extension For SOA Floating License Key
    - IBM Rational Test 50 Virtual Tester Pack Floating License Key
  - OPTION B
    - IBM Rational Service Tester for SOA Quality Floating License Key Rational Service Tester
    - IBM Rational Test 50 Virtual Tester Pack Floating License Key
  - OPTION C
    - IBM Rational Service Tester for SOA Quality v8.5 and later Activation Kit
    - IBM Rational Test 50 Virtual Tester Pack Floating License Key

## License verification

---

Every part of Rational Performance Tester needs licensing. Verify the licenses before you start working.

Also, if you get a license error, the first step is to verify the licenses.

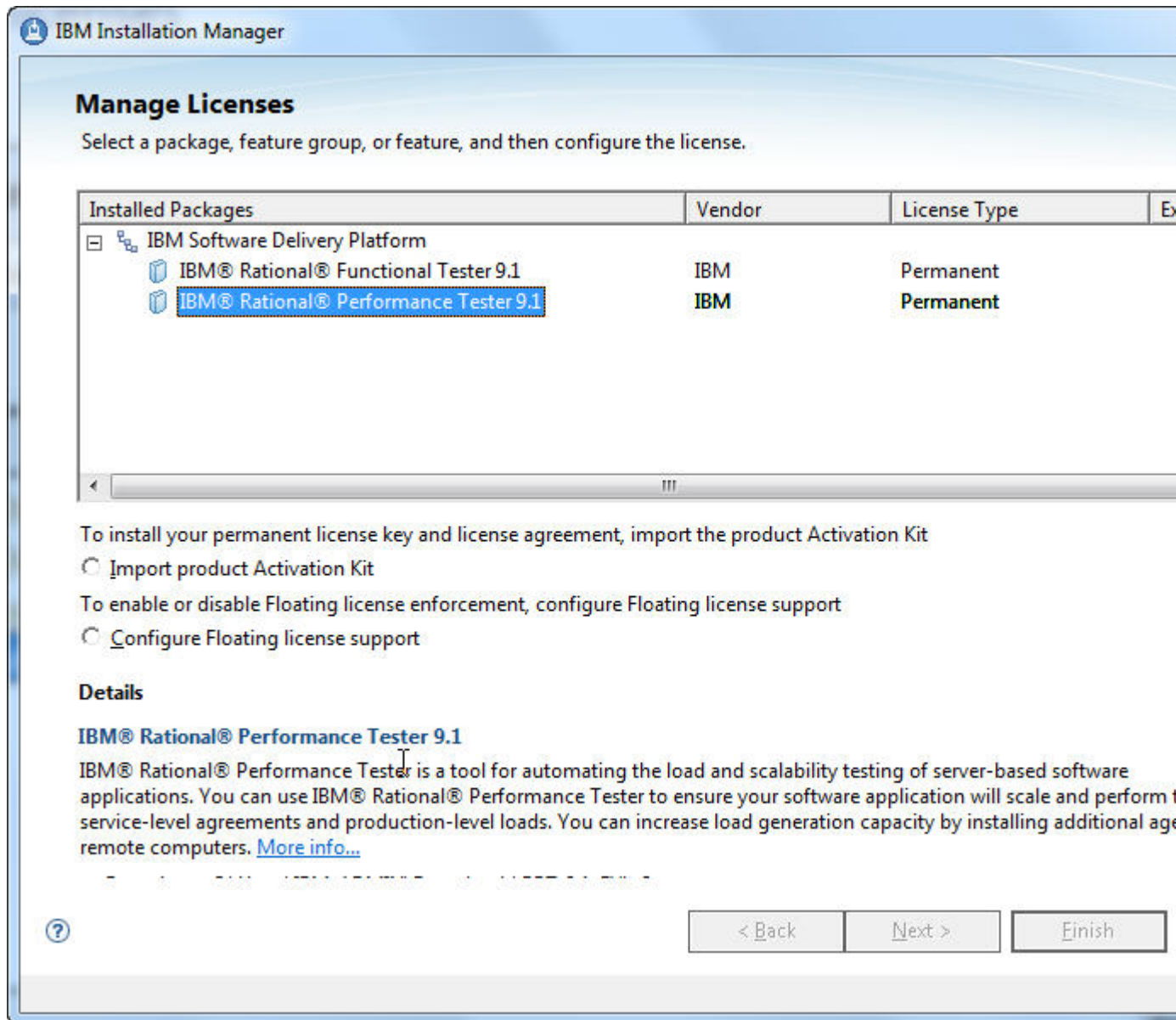
The following exception might occur when the workbench cannot check out the protocol license or the virtual-testers license pack.

```
com.ibm.rational.test.It.licensing.RPTLicenseException
```

## Verifying the base license

The base license is the license for the workbench and a limited number of virtual users on different protocols.

1. Open IBM Installation Manager.
2. Click **Manage Licenses**.  
See Rational Performance Tester under **Installed Packages**



### Related concepts

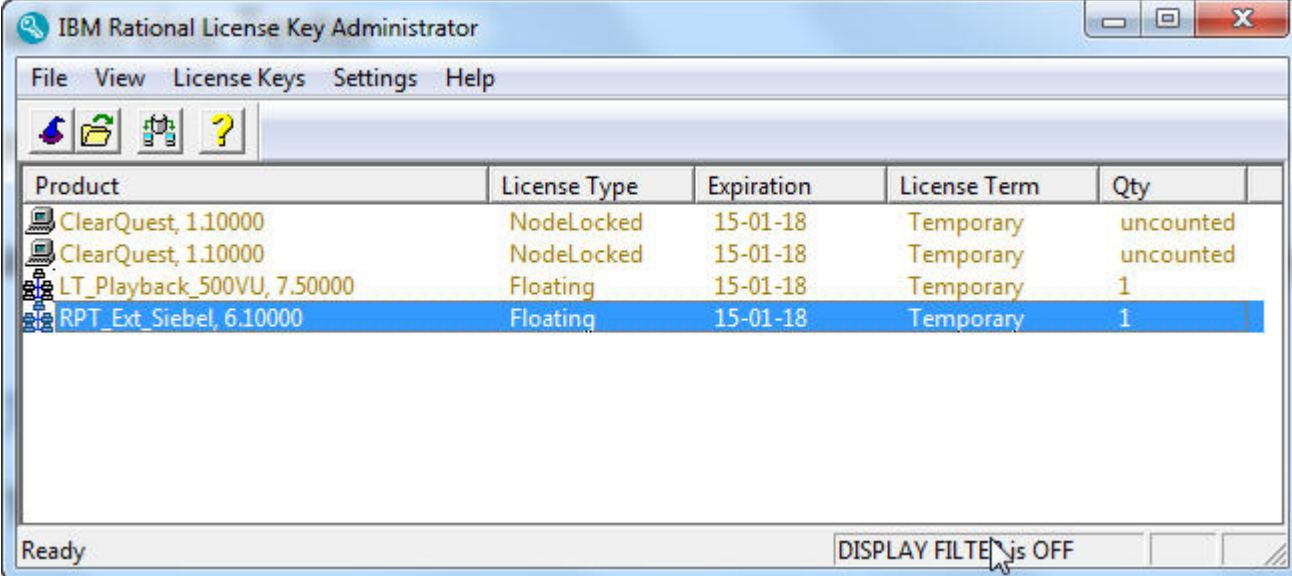
[Base license](#) on page 3

## Verifying protocol and virtual-testers licenses

1. Start the Rational License Key Administrator.

2. Click **Cancel** in the **License Key Administrator Wizard**.
3. Review the protocol license and virtual-testers license.

### Example



The screenshot shows the IBM Rational License Key Administrator window. The window title is "IBM Rational License Key Administrator". The menu bar includes "File", "View", "License Keys", "Settings", and "Help". Below the menu bar is a toolbar with icons for home, refresh, search, and help. The main area contains a table with the following data:

Product	License Type	Expiration	License Term	Qty
ClearQuest, 1.10000	NodeLocked	15-01-18	Temporary	uncounted
ClearQuest, 1.10000	NodeLocked	15-01-18	Temporary	uncounted
LT_Playback_500VU, 7.50000	Floating	15-01-18	Temporary	1
RPT_Ext_Siebel, 6.10000	Floating	15-01-18	Temporary	1

The status bar at the bottom left shows "Ready" and the bottom right shows "DISPLAY FILTERS OFF".

This License Key Administrator shows the following licenses. Here, you can run a schedule of 505 users in the HTTP protocol or Siebel protocol.

- 500 virtual-testers floating license.
- Siebel protocol floating license.

### Related concepts

[Protocol license](#) on page 4

[Virtual-testers license](#) on page 4

# Index

## A

activation kit [3](#)  
agent [3](#), [4](#), [5](#), [5](#)  
authorized user license [3](#), [4](#), [4](#)

## B

base license [3](#), [4](#)

## C

Citrix [4](#)  
concurrent license, *See* floating license

## E

exception [5](#)

## F

floating license [3](#), [3](#), [4](#), [4](#), [4](#)

## I

Installation Manager [3](#), [4](#), [5](#), [5](#), [6](#)

## L

License Key Administrator [3](#), [4](#), [5](#), [5](#), [6](#)  
license server [3](#), [3](#), [4](#), [4](#), [5](#), [5](#)

## N

NodeLocked [3](#)

## P

permanent license [3](#), [4](#)

## R

RPTLicenseException [5](#)

## S

SAP [4](#), [5](#)  
schedule [3](#), [4](#), [4](#), [4](#), [5](#), [5](#)  
Siebel [4](#)  
SOA [4](#), [5](#)

## V

virtual tester [3](#), [5](#), [7](#)  
virtual tester pack [4](#), [5](#), [5](#)

virtual user [3](#), [3](#), [4](#)

## W

workbench [3](#), [3](#), [3](#), [3](#), [4](#)